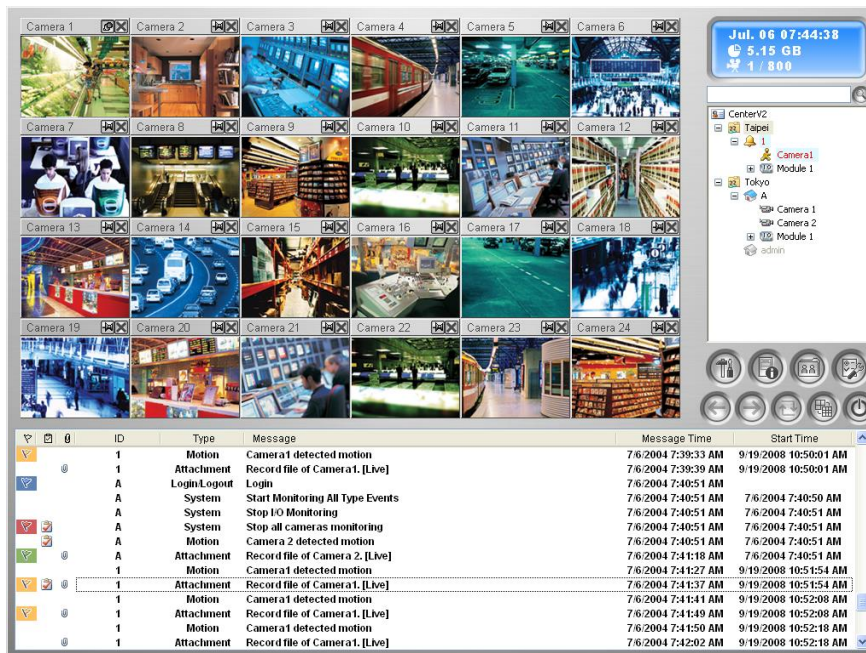


GV-Center V2



INTRODUCTION

Central Monitoring System (CMS) software GV-Center V2 enables users to monitor, receive, and record events from GeoVision surveillance systems and IP devices on a single platform. GV-Center V2 receives live view and messages with attached recordings during alert events, allowing you to track any anomalies on the premises. Using its two-way audio feature, GV-Center V2 can remotely manage and communicate with monitored sites from a central location.

The free standard version of GV-Center V2 can manage up to 5 subscribers and a total of 160 channels, making it ideal for small security environments such as residential areas. The Pro version of GV-Center V2 is recommended for medium to large security networks; it requires a paid license and supports up to 500 subscribers and 800 channels in total.

GV-CENTER V2 VS. GV-CENTER V2 PRO

GV-Center V2

- ▶ Up to 5 subscribers and a total of 160 channels
- ▶ Suitable for small security environments, e.g. residential areas
- ▶ Free software

GV-Center V2 Pro

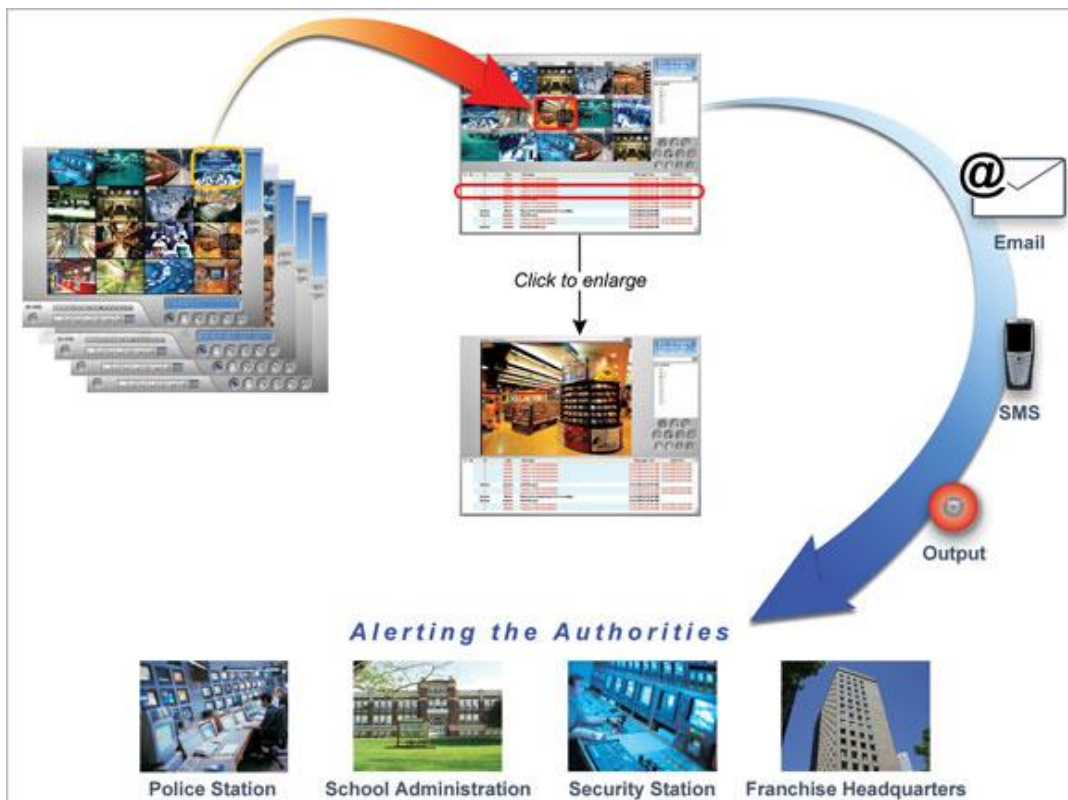
- ▶ Up to 500 subscribers and a total of 800 channels
- ▶ Suitable for medium to large CMS networks, e.g. alarm services, chain stores and large corporate environments
- ▶ Paid software

ALERT EVENTS

The following are 19 of the most frequently used alert events on GV-Center V2. When an alert event occurs, GV-Center V2 can automatically activate alarms, send e-mail or SMS notifications, and trigger I/O devices to notify operators or authorities of the need for immediate security measures. Furthermore, GV-Center V2 includes a handy alarm report feature that details the course of the events, including the event type and the measures taken, as well as time records, during the events.



CASE DIAGRAM



CENTRAL MONITORING FEATURES

- ▶ Up to 5 subscribers and a total of 160 channels (standard version)
- ▶ Up to 500 subscribers and a total of 800 channels (Pro version)
- ▶ Live images and text messages upon alert events: video lost, motion detection, I/O module lost, I/O triggered, connection lost, subscriber login/logout, surveillance system abnormality, intruder, missing object, unattended object, POS loss prevention, disk full and more
- ▶ Alert notifications via alarm, SMS, e-mails
- ▶ Two-way audio communication
- ▶ Remote PTZ control
- ▶ Remote I/O device control
- ▶ Subscriber information on the number of cameras and I/O devices with their status
- ▶ Multiple monitor support for main screen, event list, and alert events
- ▶ Subscriber schedule for monitoring period and alerts when not followed
- ▶ Alarm reports to detail the course of events
- ▶ E-Map alerts displaying the locations of triggered cameras and I/O devices
- ▶ Event charts for daily, weekly, and monthly statistical analysis
- ▶ Failover server for continuous monitoring
- ▶ RSA and AES encryption for a secured network

EVENT LIST FEATURES

- ▶ 7 types of event messages: alarm, record, connection status, motion detection, subscriber login/logout history, system status and module trigger
- ▶ Video attachment by event
- ▶ Event flags for filtering and organizing events
- ▶ Event Log search
- ▶ Backup in Access format for later retrievals
- ▶ Customized event tabs and message colors (Pro version only)

RECORDING FEATURES

- ▶ Automatic video recording upon user-selected alert events, e.g. motion and I/O triggers
- ▶ Pre-and post-alarm video recording

Specifications

Features	GV-Center V2	GV-Center V2 Pro
Maximum # of Channels	160	800
Maximum # of Subscribers	5	500
Maximum # of Sensors / Alarms	720 / 720	72,000 / 72,000
Realtime Audio Monitoring	Yes	
Remote PTZ Control	Yes	
Remote I/O Control	Yes	
Auto Recording	Yes	
Event List Viewer	Yes	
Event List Filter	Yes	
Dual Monitor Support	Yes	
Network Load Support	No	
Automatic Connection Recovery	Yes	
Supported Language	Arabic, Bulgarian, Czech, Danish, Dutch, English, Finnish, French, German, Greek, Hebrew, Hungarian, Indonesian, Italian, Japanese, Lithuanian, Norwegian, Persian, Polish, Portuguese, Romanian, Russian, Serbian, Simplified Chinese, Slovakian, Slovenian, Spanish, Swedish, Thai, Traditional Chinese, Turkish	

Minimum System Requirements

CPU		GV-Center V2	GV-Center V2 Pro
OS	64-bit	Windows 10 / 11 / Server 2016 / Server 2019 / Server 2022	
CPU		Intel Core i3 2130, 3.4 GHz	Intel Core i7 2600, 3.4 GHz
Memory		4 GB Dual Channels	8 GB Dual Channels
Hard Disk		500 GB	
Graphic Card		PCI-Express, 1024 x 768, 32-bit color	
Direct X		9.0c	
Software		.Net Framework 3.5 SP1 and Chart Control	

Note:

1. It is not recommended to install GV-Center V2 (Pro) and GV-Control Center on the same PC. **Running GV-Center V2 (Pro) and GV-Control Center on the same PC may result in CPU overload error or system failure.**
2. To perform GPU decoding, refer to the *GPU Decoding Specifications*.

GPU Decoding Specifications

A higher total frame rate can be achieved if your CPU comes with onboard GPU or is connected to external GPU for GPU decoding.

Onboard GPU: GPU decoding is only supported when using the following Intel CPU:

For **H.264** Video Compression

- 2nd ~ 8th Generation Intel Core i3 / i5 / i7 Desktop Processors
- 9th ~ 13th Generation Intel Core i3 / i5 / i7 / i9 Desktop Processors

For **H.265** Video Compression

- 6th ~ 8th Generation Intel Core i3 / i5 / i7 Desktop Processors
- 9th ~ 13th Generation Intel Core i3 / i5 / i7 / i9 Desktop Processors

Note: To get the best performance of 12th Generation Intel Processor or later versions, make sure to upgrade GV-Center V2 to V18.4 or later.

External GPU: GPU decoding is only supported when using NVIDIA graphics cards with compute capability 3.0 or above and memory 2 GB or above. To look up the compute capability of the NVIDIA graphics cards, refer to: <https://developer.nvidia.com/cuda-gpus>.

Note:

1. One external NVIDIA graphics card is supported to perform GPU decoding for free.
2. GeForce GTX1060 is not supported.

Onboard GPU + external GPU: To have both the onboard and external GPU to perform GPU decoding, the GPUs must follow their respective specifications listed above.

Note:

1. If you have both onboard and external GPU installed, the onboard GPU must be connected to a monitor for H.264 / H.265 GPU decoding.
2. CUDA compute capability 5.0 or higher is required to ensure optimal performance.

Software License

Free License for GV-Center V2	5 subscribers, 160 channels
Paid License for GV-Center V2 Pro	500 subscribers, 800 channels
Increment for Each License	N/A
Optional Combinations	1. Center V2 Pro 2. Center V2 Pro + Vital Sign Monitor
Dongle Type	Internal or external

Note: It is recommended to use the internal GV-USB Dongle to have the Hardware Watchdog function, which restarts the PC when Windows crashes or freezes.

Compatible Products (Subscribers)

- GV-NVR
- GV-VMS
- GV-AI Guard
- GV-SNVR: GV-SNVR0412 / 0812 / 1612
- GV-Video Server: GV-VS21600 (HD Video Decoder)
- GV-IP Camera (If the camera does not have the Center V2 setting page, it is required to use GV-Cloud Bridge to connect between the camera and GV-Center V2)

Note:

1. Refer to this [document](#) for active software versions.
2. We provide individual support for receiving AI and PVD events from GV-VMS, GV-AI Guard and GV-Cloud Bridge, SDK events from GV-VMS, and GV-AI Inference Server (GV-AIS) services. For details, please contact our sales representative.

Options

Optional Devices	Description
GV-IO Box Series	GV-IO Box series provides 4 / 8 / 16 inputs and relay outputs, and supports both DC and AC output voltages, with optional support for Ethernet module and 4E additionally supporting PoE connection.
GV-Cloud Bridge	GV-Cloud Bridge is an encoder that connects any ONVIF or GV-IP camera to the GeoVision software and mobile app for integrated monitoring and administration.