

OET-251H-M Smart Terminal

OET-251H-M



Overview

OET-251H-M smart terminal features high performance, high reliability, high accuracy rate, large library capacity, quick recognition and excellent light adaptability. UNV smart technology is perfectly integrated into the access control product to realize precise access control by smart authentication based on the deep-learning algorithm. This product can be widely used in application scenarios such as buildings, parks, enterprises and offices.

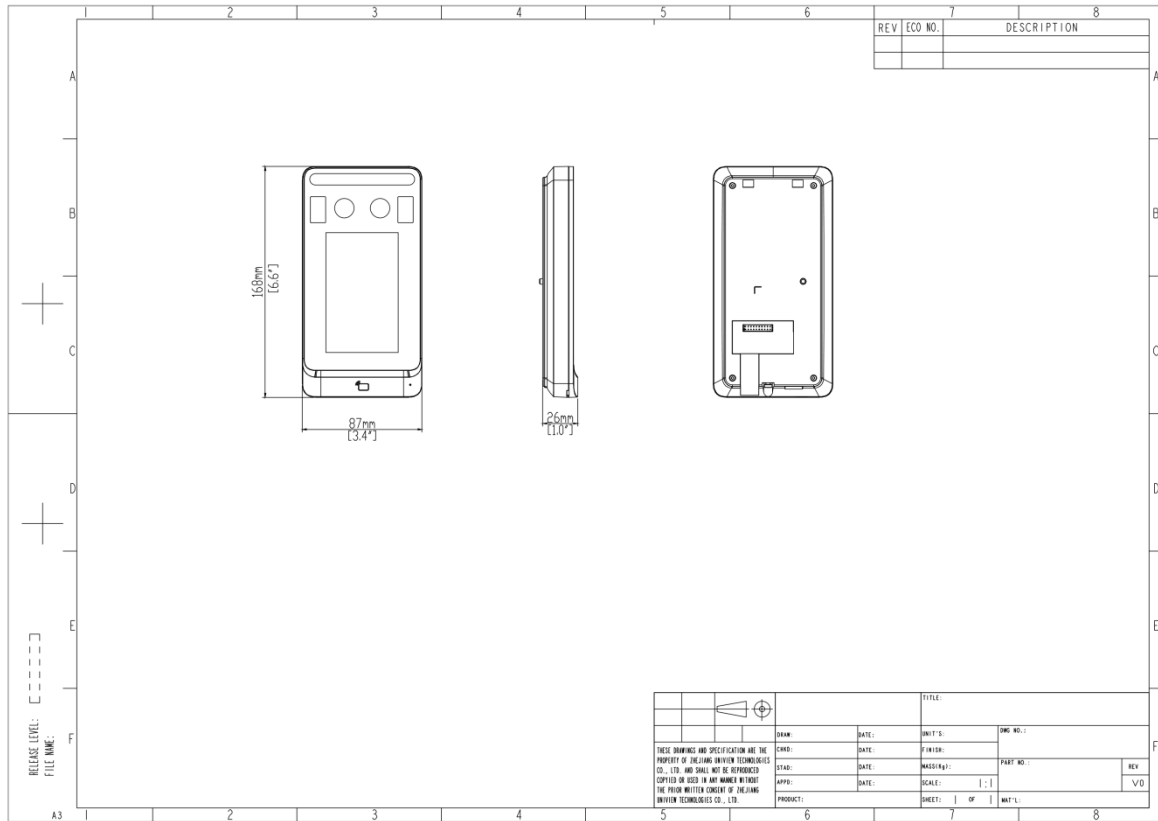
Features

- With UNV deep learning algorithm model, accuracy rate > 99%, false rate < 1%, fast recognition speed (up to 0.2s)
- Built-in deep learning chip allows local offline recognition, smart recognition capacity: 10,000
- Fastest recognition time 0.2 seconds, various model merge mode are used to reduce false rate and increase pass rate
- Support screen sleep mode, keep the minimum brightness to prevent glare at night
- Support card, password authentication to control door open
- Built-in 4G EMMC front end storage, stable and reliable, up to 30,000 events capacity (with images)
- Support direct control door lock, exit button, door contact detection to implement access control management
- Supports real-time visitor viewing via the indoor station or APP, and enables remote door unlocking and video intercom communication
- Support tamper protection, support door opening timeout, support time exceeding alarm, support keeping door opening while fire alarm active.

Specifications

Model	OET-251H-M
Hardware Specification	
Operation System	Linux
Interface	LAN×1, RS485×1, Wiegand IN×1, Wiegand Out×1, Alarm Input×1, Alarm Output×1, Lock×1, Door Contact ×1, Exit Button×1
Power Supply	DC 12V±25% input
Screen	Touch Screen, Size:4 inch, Resolution: 480×800
Supplement Light	LED soft light and infrared light
Weight	242g
Dimensions (L x W x H)	168.0mm×87.0mm×26.0mm
Mount Method	Standard metal wall mount, supports bare installation and 86-box installation
Protection Level	IP54 (Apply waterproof glue to the gap between the device and the wall. For more information, see the quick guide.)
Operating Environment	-20°C~+60°C, Relative Humidly<95% (non-condensing)
Application Situation	Indoor
Authentication Mode	Smart Recognition Whitelist: (1: N); Card:(1:N)
Specification Index	
Accuracy Rate	>99%
Recognition Time	200ms
Smart Recognition Capacity	10000
Card Capacity	10000
Storage Capacity	4GB
Event Capacity	100,000 (without images); 30,000 (with images)
User Management	Support human being library addition, deletion, update
Record Management	Support local recording and real-time upload
Basic Business	
Door Opening Method	Password, Card
Card Support	Mifare 1 Card
Communication Mode	100Mbps Ethernet interface

Dimensions



Unlimited New View

浙江宇视科技有限公司



<http://www.uniview.com>



overseasbusiness@uniview.com; globalsupport@uniview.com



South Tower, Building 10, Wanlun Science Park, 88 Jiangling Road, Hangzhou, P.R.China



©2023-2025 Zhejiang Uniview Technologies Co., Ltd. All rights reserved.

*Product specifications and availability are subject to change without notice.

虽然我司试图在本资料中提供准确的信息，但不保证资料的内容不含有技术性误差或印刷性错误，为此我司对本资料中的不准确不承担任何责任。我司保留在没有通知或提示的情况下对本资料的内容进行修改的权利。